

MATERIALS AND FINISHES

BODY ZINC ALLOY
PLATED NICKEL

CENTER CONTACT PHOSPHOR BRONZE
PLATED GOLD

INSULATOR POLYPROPYLENE (94-V0)

MOUNTING POST PHOSPHOR BRONZE
PLATED TIN

SOLDER TAIL COPPER OVER STEEL
PLATED TIN

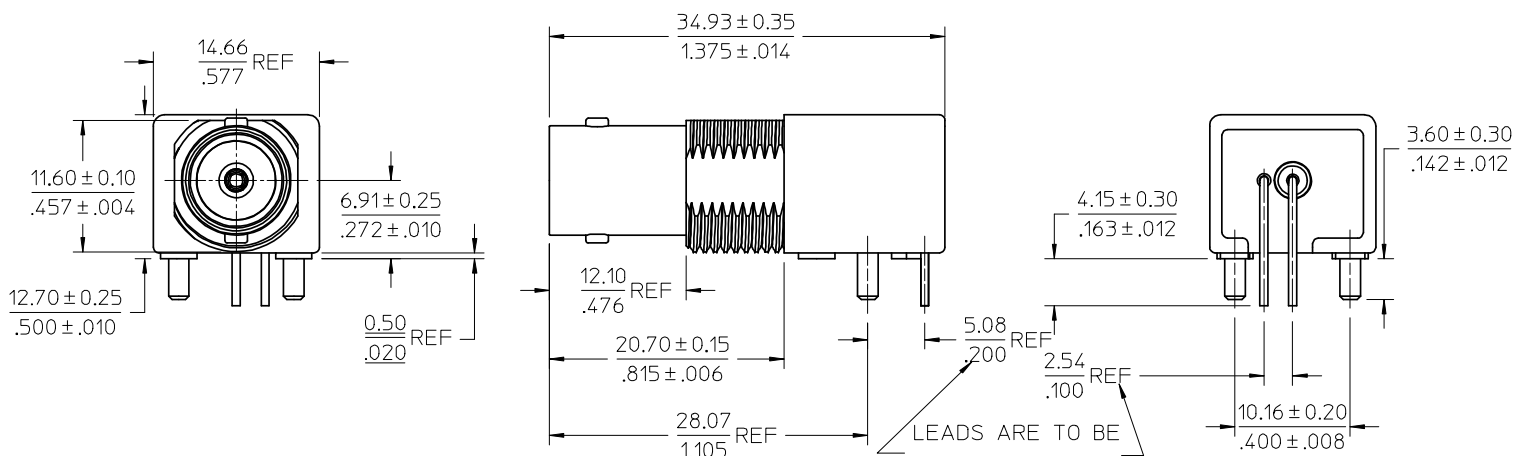
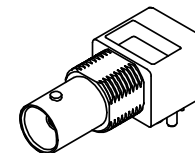
JAM NUT BRASS
PLATED NICKEL

LOCK WASHER PHOSPHOR BRONZE
PLATED NICKEL

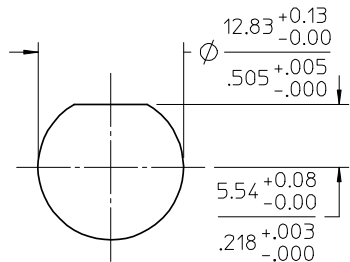
BNC JACK
75 OHM
INTERFACE

1/2-28 UNEF-2A

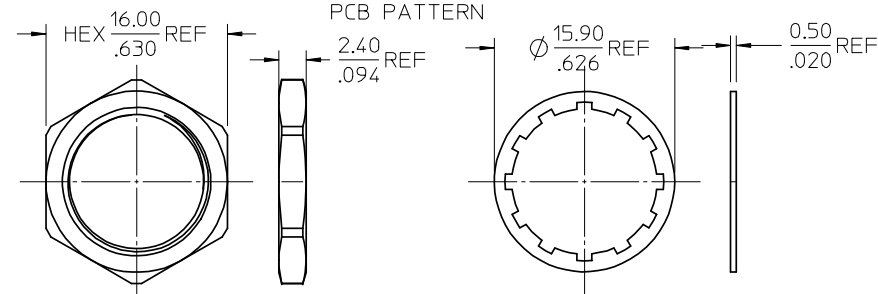
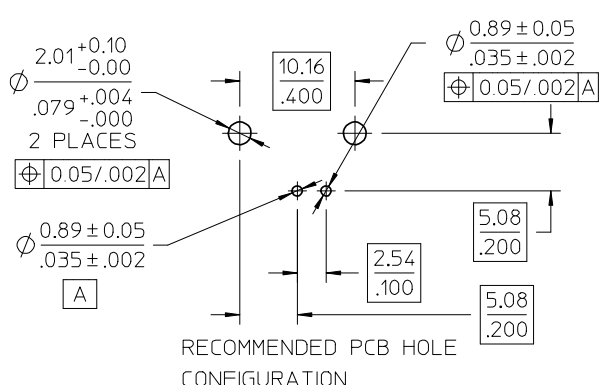
TOP VIEW



LEADS ARE TO BE
ADJUSTED TO FIT
PCB PATTERN



RECOMMENDED MOUNTING HOLE
PANEL THICKNESS: 5.50 (.216) MAX
RECOMMENDED MOUNTING TORQUE:
1.36 N-m (12 INCH LBS) MAX



PS-73598-0051	PRODUCT SPECIFICATION
SPECIFICATION	DESCRIPTION

73101-0401	WITH JAM NUT AND WASHER
73101-0400	WITHOUT JAM NUT AND WASHER
PART NO.	DESCRIPTION

CHG: 94V-0 WAS
94-VZ

EC NO: URF2008-0496
DRWN: WIENER 2008/04/01
CHKD: SHAH 2008/04/01
APPR: WIENER 2008/04/01

QUALITY SYMBOLS
▽=0
▽=0

DESCRIPTION

REV: A2

GENERAL TOLERANCES (UNLESS SPECIFIED)

	mm	INCH
4 PLACES	± .005	± .0002
3 PLACES	± .004	± .00015
2 PLACES	± .003	± .0001
1 PLACE	± .002	± .000075

ANGULAR ± ---°

DRAFT WHERE APPLICABLE
MUST REMAIN
WITHIN DIMENSIONS

DIMENSION STYLE: MM/IN

SCALE: DESIGN UNITS METRIC

TITLE: BNC JACK, R/A PCB, 75 OHMS
DIE CAST, RECEPTACLE
BNC-J/RA/PCB

APPROVED BY: MI SEN 2007/06/07

MATERIAL NO. SEE TABLE

DOCUMENT NO. SD-73101-040

SHEET NO. 1 OF 1

THIS DRAWING CONTAINS INFORMATION THAT IS PROPRIETARY TO MOLEX INCORPORATED AND SHOULD NOT BE USED WITHOUT WRITTEN PERMISSION